

# QUARTERLY IMPACT REPORT

JANUARY - MARCH | 2022



Dear Friends,

2022 is proving to be a busy year for TeachUNITED! Our team kicked off the new fiscal year with a great deal of momentum and ambitious plans for future growth and innovation.

Most notably, according to impact data analyzed in the first quarter, regional teams have seen impressive student academic growth and improvement in teacher skills despite pandemic-related challenges!

To reach scaling goals, we are prioritizing geographic expansion and impact through NGO and government partnerships. Currently, we are working with and coaching partners in Nicaragua and Tanzania. We also are thrilled to share that we signed with a partner in a new country - Mexico! We are encouraged by continued interest from prospective partners in new regions and countries, allowing us to serve even more educators and students this year.

Our direct services teams also kicked off the year with new school partners. Educators are working through our training programs with support from their coach and peers. In the U.S., we start the year with new offerings for schools that ease the burden of entry for educators and support them when, where, and how they need it most.

As the COVID landscape continues to evolve, schools are working to overcome obstacles and learning loss. TU remains unwavering in our commitment to support educators with effective and accessible solutions to improve student outcomes and accelerate growth.

This quarterly report provides a detailed overview of our progress. We are so grateful for the support of this community and the belief in our work that it represents.

With gratitude,



Heather Hiebsch, Co-Founder and CEO

## Q1 HIGHLIGHTS

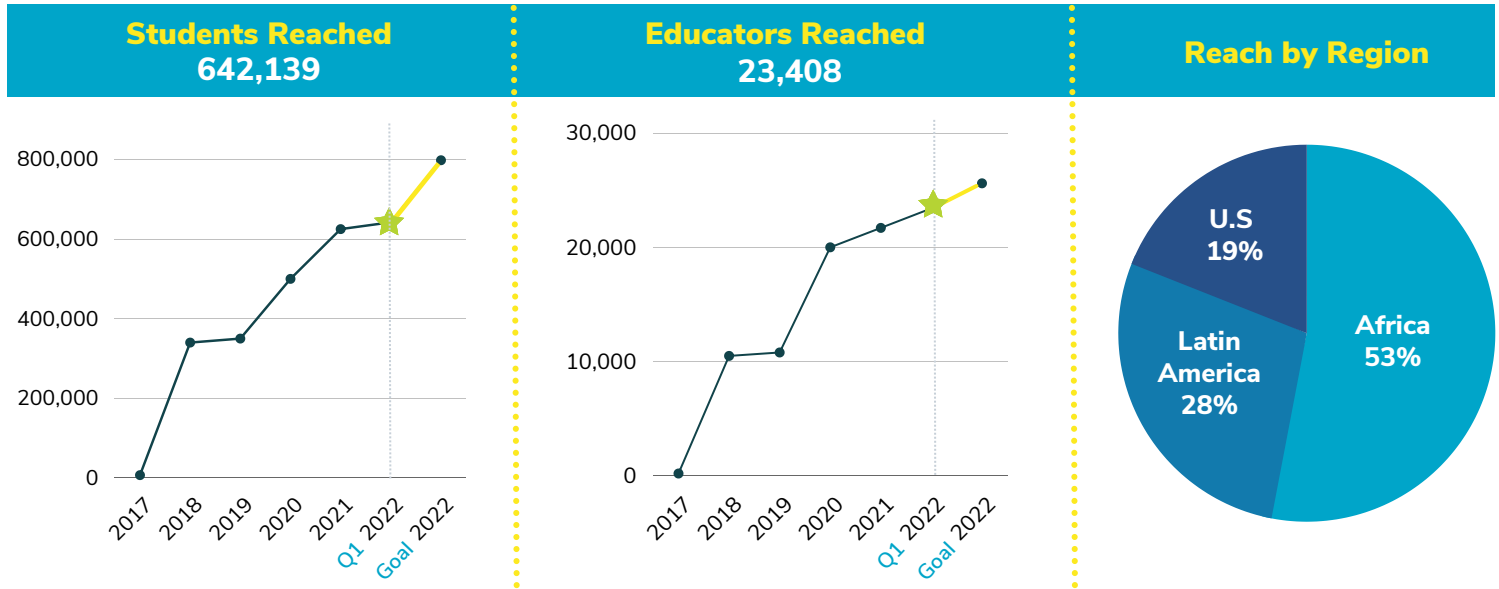
- TU LatAm expands into [new country](#): Mexico.
- TU Africa welcomes [three new regions](#) in Tanzania via new NGO partnerships.
- TU USA partners with the [New Hampshire Dept. of Education](#) for summer programming.
- TU welcomes new donor partner: [Schooner Foundation](#).
- Our regional teams saw [positive impact data](#) from TU students and teachers.
- Our [reach](#) grew to 642,139 students and 23,408 educators.
- TU launched a [new website](#) to better communicate to all audiences.
- In Africa, district officials publicly [acknowledged TU staff](#) as a key driver of positive change in thriving schools.

## Q1 CHALLENGES

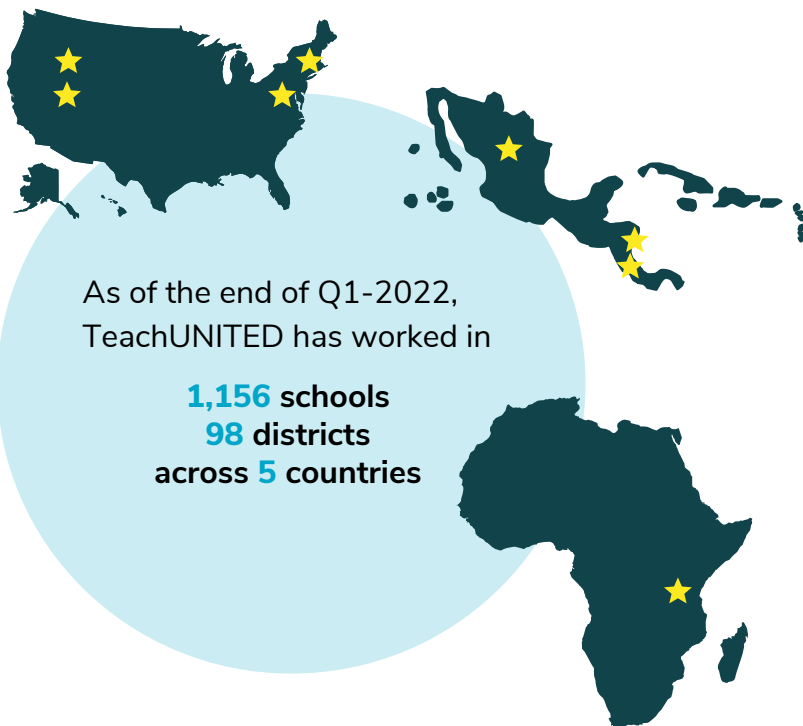
- Many educators are overwhelmed and exhausted. In the U.S., we are offering a [new program](#) and shifts in delivery options to provide greater flexibility in timing, pace, and length.
- Our team is finding NGOs and school districts continue to be impacted by COVID-related staffing, budget, and other challenges. This is causing a delay in many contract processes, even though [the need for teacher support is as great as ever](#). In response, TU is increasing charitable giving [goals](#) and actively seeking new NGO and government partners to underwrite programs so we can continue to serve teachers and students. We welcome funding referrals!

# KEY INDICATORS | REACH & SCALE

The first quarter of 2022 saw the continuation of programs that started in 2021, as well as 46 new schools that started the program across all three regions. TU coaches kicked off the training program for new participants in Q1 to help them develop the high-impact skills to transform their schools and communities. Our global reach to date\*:



## WHERE WE WORK



## OUR PATH TO SCALE

TeachUNITED is scaling through partnerships. Outreach efforts are ongoing to find new partners to collaborate for global educational improvement for rural schools. These include:

- NGOs working with large school networks
- Local, regional, and national governments
- Associations/networks (to expand reach)

## Q1 ACTIVE PARTNERSHIPS



\*Cumulative data as of March 31, 2022

## KEY INDICATORS | IMPACT

Rural schools around the world continue to struggle with the longer-term effects of the pandemic, as well as ongoing inequities in education. Though TU partner schools faced the same challenges as its peer schools, they continued to outperform the control schools in the region. As well, many of our partner schools saw positive growth in pass rates and literacy and math. This impact data supports the effectiveness of our research-based programs and demonstrates the resilience of our teachers, students, and coaches. Our coaches continue to stand side-by-side with educators and partner NGOs to deliver tangible and effective solutions to emergent and ongoing challenges.

### IMPACT HIGHLIGHTS



#### AFRICA: INCREASE IN SECONDARY SCHOOL PROMOTION

Tanzania's 2021 cohort of secondary schools showed dramatic increases in promotion rates, **increasing an incredible 65%** in one year compared to a 15% decrease at control schools. **Girls** also showed impressive improvement in promotion rates, **increasing 23%** compared to a 30% decrease in control schools.\*



#### LATIN AMERICA: IMPROVEMENT IN FOUNDATIONAL SKILLS

Students in Costa Rica saw an overall **7.6% increase** in mathematics assessment scores. **Girls** saw an impressive **8.8% increase** in literacy scores and **14.1% increase** in math. At the same time, teachers' intention to continue in the teaching profession **increased 6%** from pre- to post-program--even in a pandemic year.\*



#### UNITED STATES: GROWTH IN TEACHER SKILLS

In the U.S., 94% of educators participating in the School Accelerator Program said the knowledge and the skills acquired from the training will help them improve their teacher practices, and **100% of educators said their TU Coach was knowledgeable, topics were relevant, and that their students will benefit from the educator participation in the training.**\*

### IMPACT SPOTLIGHT

During awards ceremonies celebrating Monduli and Karatu schools that excelled on national exams, many of TU's partner schools received awards for performance. District officials publicly complemented TU's impact on educators' instructional skills. [Click to read](#)



TeachUNITED has greatly contributed to student performance in Karatu district. Pass rates have been growing from 69% three years ago to 88% this year, these are some of the more vivid examples of the contribution of TeachUNITED's work.



Kalista Maina, District Secondary Education Officer  
Karatu Ministry of Education

\*Tanzania and Costa Rica: Data calculated pre-program (11/2020) to completion (12/2021). U. S.: Participant responses gathered from educator and administrator cohort exit tickets and surveys during the 2021-2022 school year.


## PROGRAMS | DIRECT SERVICES DELIVERY MODEL

TeachUNITED trains educators and administrators directly in schools in our innovation hubs in Monduli and Karatu Districts in Tanzania, the Sarapiquí and Monteverde districts in Costa Rica, and in rural schools across the United States. Together with our innovation sites, we test and measure program implementation and gather deep impact data. Schools across all three regions have started new programs in the first quarter or continued with programming started in 2021.

### PROGRAM UPDATES

#### Karatu & Monduli, Tanzania

A lot of great work is happening to get schools ready for the year!

- Baseline data from schools has been collected and student math and literacy assessments are being gathered.
- The team projects it will support 15 schools and 82 educators in the two districts through the Direct Services program.
- Lead Teachers have registered and started online coursework in Google Classroom.
- Teacher workshops have started in Karatu with 47 teachers from 6 schools. They were officiated by district leaders and covered by local media (video in Swahili).  [Click to watch](#)

#### Sarapiquí & Monteverde, Costa Rica

New schools have been selected and evaluation visits have begun.


- Lead teachers are registering and baseline data collection is in progress.
- The team projects it will support 12 schools and 70 educators through the Direct Services program.
- Two schools are sponsored by new partners, Rotary International and Amazon.

*The Amazon sponsored program is with Ostional Schools, a community that supports the National Wildlife Refuge where hundreds of thousands of Olive Ridley turtles lay their eggs each year. Classified as a "vulnerable" species, there are only 8 arribada beaches in the world. We are thrilled to be working in coordination with the Regional Ministry and Ostional rural elementary and high school to connect quality public education with conservation as we work towards the United Nations Sustainable Development Goals.*

#### United States

Teachers in Orange, Massachusetts are wrapping up their second unit on Engagement. They have been focused on Microteaching – conducting video and peer observations to look critically at snapshots of engagement practice. Many teachers have also been exploring ways to incorporate student-led practices into their students' small group time.

The Wyoming winter cohort completed their administrator pathway and celebrated their learning journey by completing the culminations in a Capstone project!

The New Hampshire Department of Education has formally signed the partnership agreement with TU. The program will start with a pilot of 5 schools in the summer with plans to support all 90 Rural Low-Income Schools in the state.  [Click to read](#)



## PROGRAMS | PARTNERSHIPS DELIVERY MODEL

In our [UNITED in Learning Program \(UILP\)](#), TeachUNITED trains partner organizations, including NGOs and governments, with high-impact teaching strategies to share with the schools and teachers they serve. Fellows participate in an intensive 6-month program to learn skills to be effective instructional coaches, then work side-by-side with educators in their own communities to improve teaching and learning using feedback and mentorship of a TU coach. Like other offerings, the program combines digital coursework, 1:1 coaching, continuous feedback cycles, and peer learning to ensure skills are learned and sustained.

## PARTNERSHIP UPDATES

TeachUNITED launched our newly developed partnership model in 2021 to scale our impact more rapidly. The team has been conducting outreach and in 2021, two new NGO partners started in Nicaragua and one joined in Tanzania. Locally-based Fellows are working through the program now with a TU Coach.



### NEW PARTNERSHIPS

**Africa:** Three new NGO partners signed contracts in Tanzania and will start coaching soon: Cube Tanzania in Zanzibar, RLabs in Iringa, and Projekt Inspire in Tanga / Dar es Salaam.

**Latin America:** Another new NGO partner, Niños en Alegría, will be launching programs soon, meaning [TU will soon begin serving 35,000 students and educators in Guerrero, Mexico.](#)



### SCALING OPPORTUNITIES

Our Africa-based team is discussing new opportunities with potential partners in Kenya, Liberia, Uganda, and Tanzania. Meanwhile, our Latin America team is in talks with new potential partners in Guatemala, Peru, Colombia, and Mexico.



### OUR GRATITUDE

A huge thank you to the Segal Family Foundation for providing connections to portfolio organizations. We welcome referrals from our community!

## KEY PROGRAM INNOVATION | FOCUS COURSES

### Supporting Educators When, Where, and How They Need it Most

Finding educators in the U.S. overwhelmed and exhausted from two years of disruptions and upheaval, our team responded by launching a new program: [Focus Courses](#). Rooted in the same research as other TU programs, the 3-month Focus Courses consider a single, high-impact topic like student-led learning and provide guidance for new teacher success. These easy-to-implement courses clear the path to participation for overburdened educators and provide tangible tools for high-quality instruction. In addition, our U.S. team has shifted all programs to be more flexible in terms of launch timing and program pace to respond to educator needs.

TeachUNITED is thrilled to be welcomed into the Big Bang Philanthropy Network! [Learn More](#)

## THANK YOU TO OUR Q1 DONORS

We are so grateful to the wonderful generosity of the TU donor community whose support will be used to bolster our impact. Funds are often used to underwrite a portion of the program cost allowing education-based NGOs and schools, no matter the size, location, or socioeconomic situation, access to world-class professional learning.

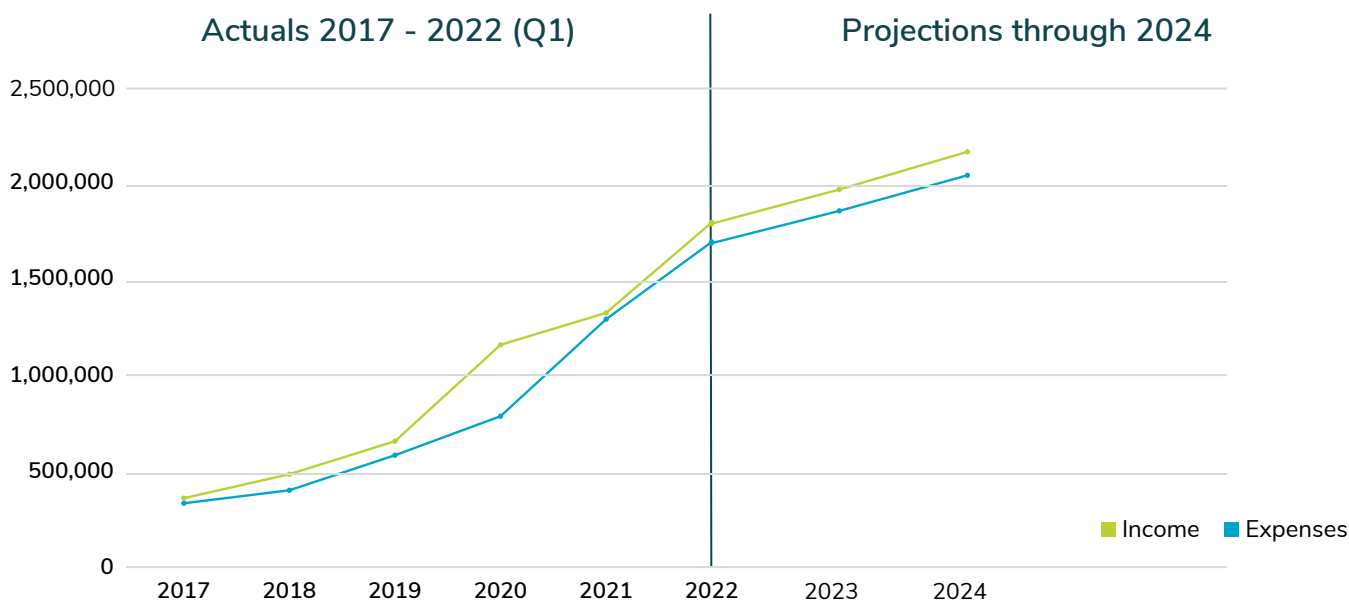
### NEW DONORS

- Schooner Foundation
- Amazon

### ONGOING SUPPORT

- Segal Family Foundation
- Meldrum Foundation
- Inspire Brands
- Robin Mendelson
- Jane and Paul Pasin
- Vidya Krishnan
- Stephanie Cornell
- Scott Dooley
- Bhargava Family Charitable Fund
- Freddy and Gregg Goldenberg

## OUR FINANCES



### 2021

TeachUNITED recognized \$1.3M of income in 2021, surpassing our annual target of \$1.2M.

### 2022

Our 2022 goal is to raise \$1.77M (philanthropy + revenue) to support operations and growth.

### Philanthropic Goals

We have increased our 2022 philanthropic goals to help more schools and education-based NGOs assuage financial barriers that may otherwise hinder their efforts to fund essential skills training for educators.

## WELCOME NEW TEAM MEMBERS!



### Anastazia Louis Malale

Regional Manager of Education Programs, Africa

Anastazia is responsible for relationship development and coaching with educational NGO partners in Africa. She is committed to seeing girls and women educated, empowered, and living free from poverty. Anastazia is a Young African Leaders Initiatives Alumni, World Literacy Foundation Ambassador, and an ACUMEN Fellow.



### Laura Kome

Marketing and Communications Manager

Laura is responsible for marketing campaigns for sales and partnerships. She will also lead broader communications for the organization. Laura brings with her many years of experience writing and designing marketing campaigns for educational companies like ACT and Pearson, and was previously a teacher.



TeachUNITED  
team members



of our Global Leadership  
Team are female



of our team members  
are from the region they represent

## PRESS & RECOGNITION

- The TU team participated in the SKOLL World Forum Ecosystem Day! Watch our presentation at our event, *Three Education Strategies That Transcend Borders*.
- The TU Africa team was publicly recognized by local press and district officials for their role in improving school performance (video in Swahili).
- TU is featured in the Missouri Association of Rural Education and Indiana Small and Rural Schools Association newsletters, and in the Concord Monitor.



More than half the world's children are not learning critical math, literacy, and life skills.

Without these foundational skills in place, students often fail to thrive as they progress through school and join the workforce. Without action, more than 1.5 billion adults could be living in extreme poverty in 2050. Underserved and rural areas are the most impacted.

We believe teachers are the solution.



**DONATE TODAY!**

**CONTACT US**